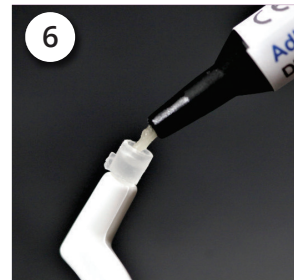
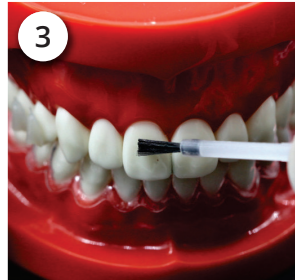
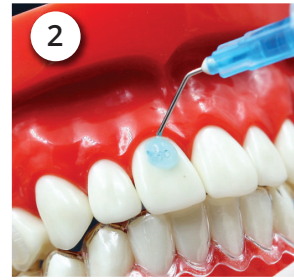
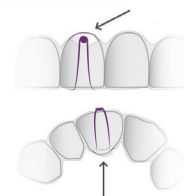


BUTTONS PLACEMENT

- 1 Please prepare the required instruments and materials (acid etch, bonding agent, composite filling, light curing device, mini-mold and handle).
- 2 Apply acid etch gel to the mid cervical third of the tooth to be extruded. This can be altered for other movements indicated in the treatment.
- 3 Apply bonding agent to the indicated area where the button will be attached.
- 4 Light cure.
- 5 Place the mini-mold on the handle, make sure the wings of the mini-mold are horizontal to the handle itself.
- 6 Inject composite filling the mini-mold. The composite could be flowable composite or brackets bonding composite.
- 7 Place handle and mini-mold correctly with the wings of the mini-mold parallel to the teeth incisal edge.
- 8 Light cure while holding handle firmly towards tooth structure.
- 9 Remove handle and finish the button with diamond bur.



Using the elastics:



CLEAR X
Attachments &
Buttons Placement

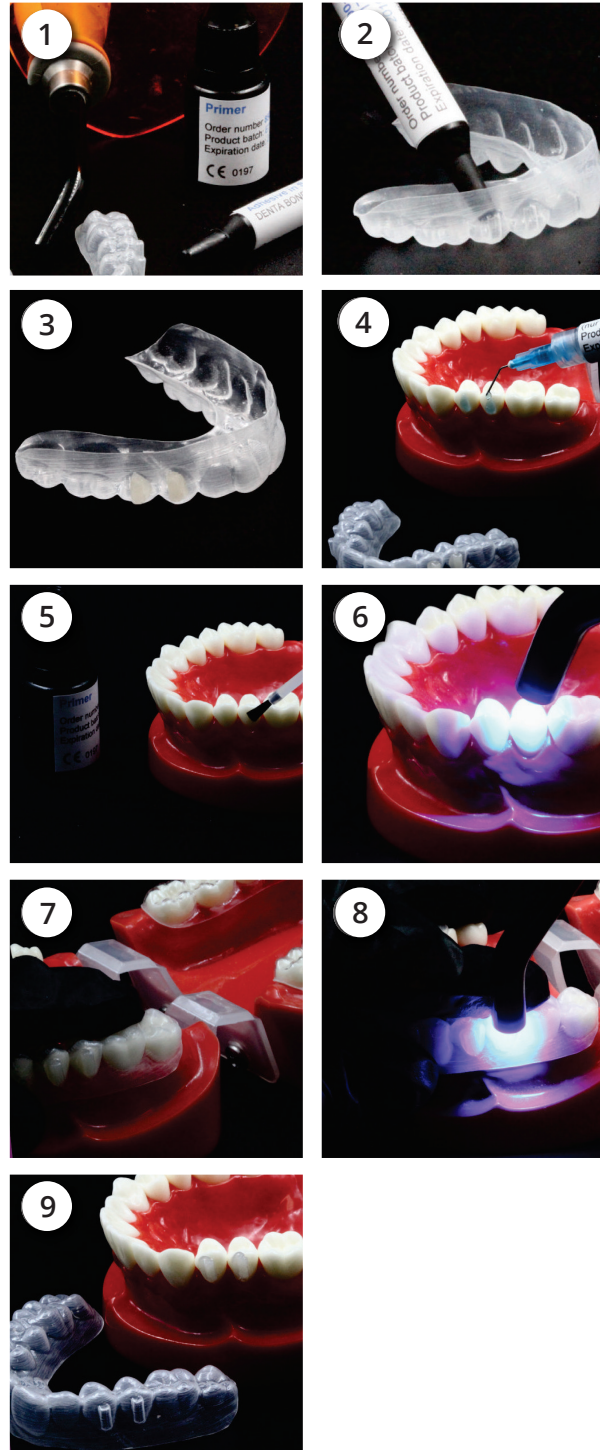


ATTACHMENTS AND BUTTONS

Fixing elements made of composite enable certain tooth movements. If placing attachments is required for the success of the treatment, the positioning and shape are already planned by us and included in the treatment plan.

Attachments placement

- 1 Please prepare the required instruments and materials (acid etch, bonding agent, composite filling, light curing device).
- 2 Take out the template from the ClearX kit delivered to you and fill out the indicated indented locations for attachments with composite respectively.
- 3 Make sure that no composite is outside the deepening.
- 4 Apply acid etch to enamel surface where the attachments precisely will be placed.
- 5 Apply bonding agent precisely on corresponding surfaces.
- 6 Use light curing to cure the applied bonding agent.
- 7 Place firmly and with care, this is to ensure the template fits well on the teeth and gums, especially on the indicated areas where attachments are required.
- 8 Light cure the composite filling while fixing carefully the template in place.
- 9 Remove the template and remove any remaining lashes from composite.



The clear aligners are a customized orthodontic device intended for teeth straightening for a particular patient

You have any question?

Our team will be glad to be of assistance!

+49 (0) 211 - 94198008

info@clearxaligners.com



K LINE EUROPE GMBH

SEGro Park Düsseldorf

Unit 203 J-K

Bonner Straße 203-393

40589 Düsseldorf, Germany

www.clearxaligners.com

PROUDLY
MADE IN GERMANY